

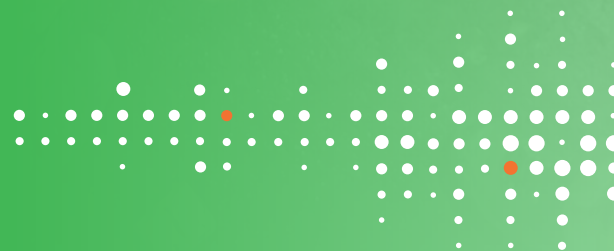


ELEMATIC

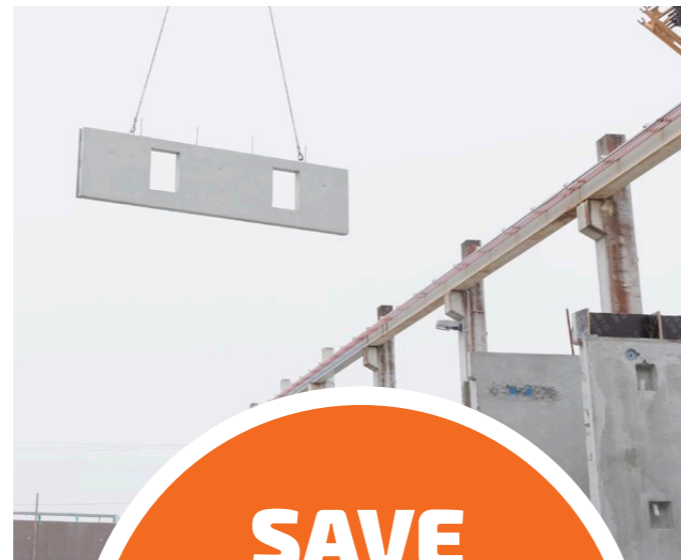


FAME

Shuttering system



EASY TO USE: FAME shuttering system



Elematic FaMe is a unique, patented shuttering system that offers versatility and a wide range of benefits – from high quality results and cost-efficient production to safe working methods and beyond.

The system consists of light aluminum side profiles, various types of magnets and planning software for creation of drawings and bills of material. It's suited for use with table molds, battery molds, and in column as well as pillar production.

The FaMe system is modular; you can start with a limited number of components and build the system as needs grow.

**SAVE
70%**
in total
shuttering
time.

FAST AND EASY TO ATTACH

Mold preparation is fast and simple with FaMe: just place the side forms in the desired places and attach them with push-button magnets.

You can move the magnets by sliding them along the surface before pushing the button for attachment. After casting, it's simple to remove the magnets with a releasing tool.

Thanks to the simple process, you can save nearly 70% in total shuttering time. It's also easy to change panel dimensions.

HIGH PRECISION

Together with aluminum side profiles, the push-button magnets make a very accurate coupling that guarantees the dimensional accuracy and rectangularity of the end products.

As there's no need for any welding, bolting, or grinding, the table surface will remain flawless.

LESS WASTE

You can cast directly on recyclable aluminum side profiles and decrease the amount of waste wood. For example, if you use 2.5 km of laminated veneer lumber (LVL) monthly, you will halve your wood purchases. The aluminum profiles can be used over and over again. With the right care, the system lasts around 10 years.

SAFE

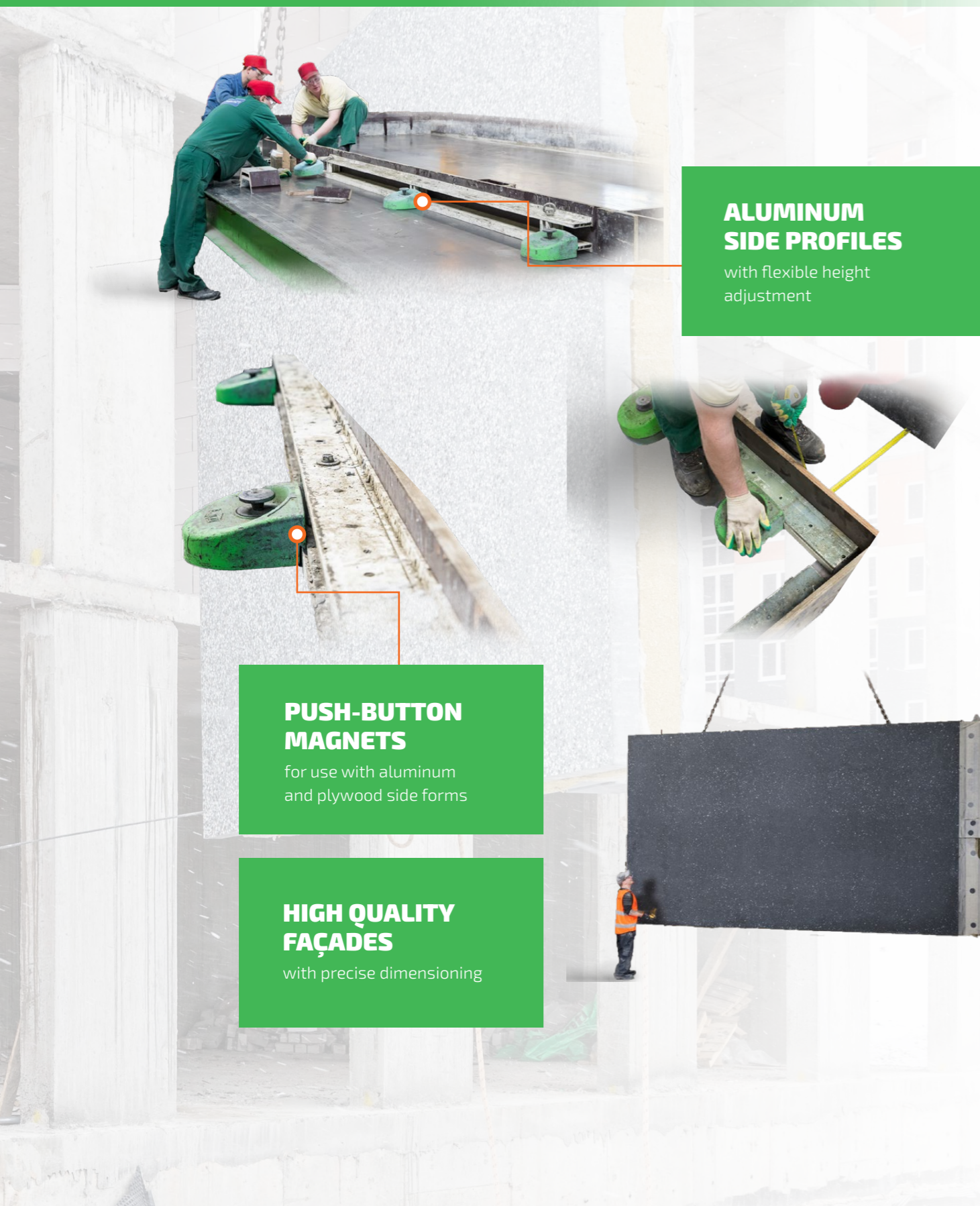
The magnets and side forms are safe to use compared to other shuttering systems. The push-button and housing of the magnet have been designed to provide cover against any injuries.

ADAPTS TO VARIOUS APPLICATIONS

FaMe side profiles and magnets can be tailored to fit to any existing side form system made from different materials, such as steel or wood. The same profile system can also cover most wall thicknesses, from 70 – 500 mm and up to 800 mm with accessories.



SANDWICH WALLS



ALUMINUM SIDE PROFILES

with flexible height adjustment

PUSH-BUTTON MAGNETS

for use with aluminum and plywood side forms

HIGH QUALITY FAÇADES

with precise dimensioning

FAME FLEX PRO

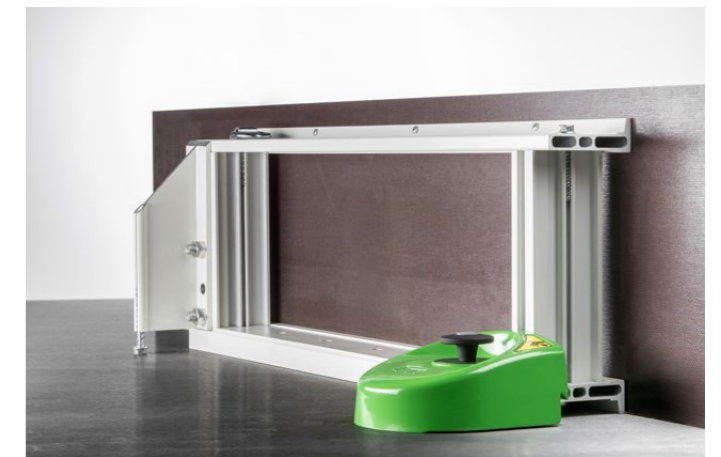
FAME BENEFITS

- Quick change of dimensions
- Precise panel dimensions
- Straight panel side profiles

The FaMe Flex Pro system is designed for the production of wall panels of up to 600 mm in thickness. It is particularly well-suited for making facades, insulated sandwich walls, and solid walls.

The FaMe Flex Pro magnet shuttering system makes it possible to furnish steel surfaces for precast products of just about any shape or size.

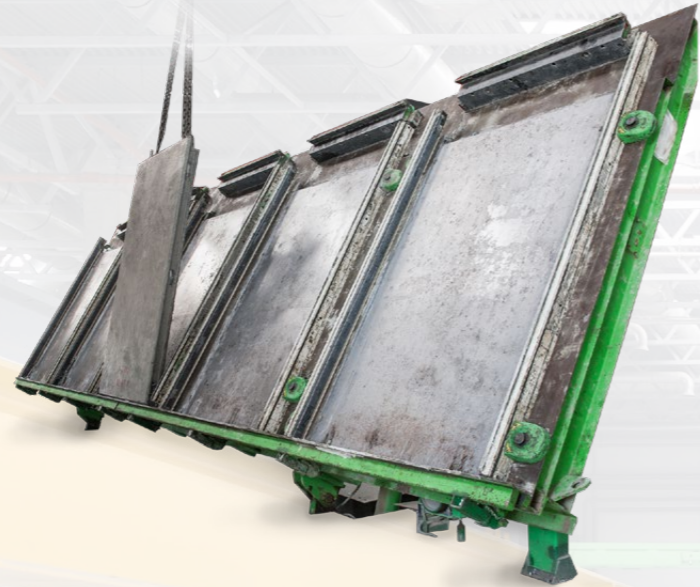
The Flex Pro is an ideal choice for varied and short production series, because dimensions can be changed quickly and effectively. For example, the intakes and outtakes of lifting hooks and reinforcing can be made freely without breaking the side molds.



SOLID WALLS

horizontal casting on tables

**LIGHT WEIGHT
PROFILES**



CASTING STRAIGHT TO ALUMINUM

Height can easily be increased by adding plywood to aluminum side form.

UNIVERSAL PUSH-BUTTON MAGNET ALLOWS EASY OPERATION



FAME LITE

solid walls



The FaMe Lite series is designed for bulk production of non-insulated pre-cast products. The series is suited for both horizontal casting on tables and vertical casting on battery molds.

The Lite series covers precast product thicknesses from 70 to 249 mm. The Lite profiles are very light, weighing only 3 to 5 kilos per meter. You can increase the profile height by adding plywood to the aluminum side form.

The Lite profiles feature a T-slot on the back of the profile, so all connections, back supports, and corner pieces can be attached with T-slot bolts. There's no need for welding.



FTO Fertigteilwerk Obermain GmbH, Germany

We chose Elematic FaMe shuttering system because it saves us a lot of time: the handling of precast concrete molds is possible mostly without crane. Also, the formwork system is very versatile.

Compared to other suppliers, the Elematic system is best suited for our use because of its robustness. What's more, it has the best magnetic adhesion and protection of the magnets against damage and staining.

Elematic is an important partner to FTO.

Günter Steinfeld, Plant manager
FTO Fertigteilwerk Obermain GmbH



SOLID WALLS

vertical casting on battery mold



**EASY OPERATION
WITH PUSH-
BUTTON MAGNETS**

**LIGHT AND EASY
TO HANDLE**



The lightness and safety of the FaMeLite profiles create great benefits especially for vertical casting in battery molds.

Since there's a T-slot on the back of the profile, all connections, back supports and corner pieces can be attached with T-slot bolts.

There's no need for welding when there's a FaMe for every need. The FaMeLite offering also includes magnets for lifting loops, welding plates, chamfers, thread-tube sockets, junction boxes and electrical fixtures.



**EASY TO BUILD
UP AND REMOVE**

**ALUMINUM
INTERMEDIATE
SIDE FORM**



Joutsenon Elementti, Finland

In early 2017, Joutsenon Elementti (Kouvola Betoni until 2020) decided to grow and focus solely on precast concrete. This called for streamlining the production facility and investing in new technology. The company chose to invest in battery molds and FaMe system, which can be used in battery molds and with tables with steel surfaces.

Ville Virsu, Head of Production at Joutsenon Elementti highlights the good results of using the Elematic FaMe shuttering system.

"We are using FaMe shuttering, and it is working extremely well. It is easy to use. The panel sides are always straight and it's easy to work with the openings. We are seeing considerable savings in time and in wood materials. FaMe makes it possible to produce good quality more efficiently than before."



BEAMS AND COLUMNS

**LIGHT AND
ADJUSTABLE
ALUMINUM FRAME**

EASY TO ADJUST



FLEX MAGNET

Holding force 16kN

**STEEL SIDE FORM
WITH INTEGRATED
MAGNETS**

H=600mm

FLEX SIDE FORM

H=500mm



The FaMe Flex system is a cost-effective solution for beam and column production when you need flexibility for occasional production. The FaMe Flex system can be used on a hollow-core slab bed, for example.

FaMe Flex makes beam and column production processes faster. With this system, you can furnish steel surfaces for beams and columns of just about any size, and change dimensions effectively.

With accessories, FaMe Flex can be used even for 700 mm thick beams and columns. For beams over 500 mm thick, it is recommended to use tensioning over the beam with a dywidag or similar threadbar.

DOORS AND WINDOWS

ADAPTERS FOR PLYWOOD SIDES

PUSH-BUTTON MAGNETS
with jaw-type connection



CORNER PIECE
KEEPS THE EDGES
AT 90 DEGREES

DOOR SIZE IS
EASY TO EXTEND
OR REDUCE



Weighing under 30 kilos, the FaMeLite aluminum 2 x 1 m door mold is lighter than any other typical solution on the market.



PRECISELY 90 DEGREES

The FaMe system is an excellent solution for window and door openings where you need an exact 90-degree angle.

The system features a special window mold and a two-sided push-button magnet, reducing the number of work phases in diverse production. The window mold comes with a diagonal form, like a half-cut pyramid, so it can be cast and lifted in one piece without additional demolding. A window mold is also light; it weighs less than 30 kg for panel thicknesses of 150 mm in 1 x 1 m size.

How do you
make doors and
windows with
FaMe shuttering?
Watch video:



FACTS ABOUT FAME PUSH-BUTTON MAGNETS

- Strong 16 kN hold suitable for all FaMe side profiles. Light, small in size
- Jaw-type connection to form
- Balanced and ergonomically designed
- Completely enclosed structure
- Suitable for casting beds to tilting tables and other molds
- Can be used over and over again



VARIOUS ADAPTERS AND ACCESSORIES

The FaMe system can be adapted to several different applications. A wide range of adapters can be used with any existing side forms. The FaMe shuttering system includes all parts needed for forming any opening shape: adapters, straight corners, and connectors. The most common magnet accessories are available from stock, including magnets for junction boxes and electrical fixtures.



FAME HOT

Developed for the needs of factories located in the world's hottest places, and for production methods where curing takes place in chambers at high temperatures.

The FaMe Hot magnet withstands high temperatures, even 70 – 80 degrees Celsius, without losing its grip strength.

REPAIR AND MAINTENANCE

A comprehensive maintenance and repair service is a vital part of the FaMe system. Spare parts are available for the magnets and profiles, and scuffed profiles can be repainted. Our stock aluminum profiles are 5.5 meters in length, and they can be cut to preferred measures.



Durable Elematic holding rack for magnets has a place for the releasing tool.



FAME

shuttering system



111-0922-EN

THE FUTURE RUNS GREEN

Elematic precast technology has enabled hundreds of thousands of building projects in over 100 countries.

Precast manufactures — our customers — make it possible to build modern buildings resource-efficiently. To meet customer needs and exceed expectations, we've developed pioneering precast equipment, offered lifecycle services and refined manufacturing processes for more than 60 years.

www.elematic.com

Elematic Oyj · Aiolantie 2, 37800 AKAA, Finland
Tel. +358 3 549 511 E-mail marketing@elematic.com



Please visit elematic.com for more information and follow us



Elematic and Acotec are trademarks of Elematic Oyj. Elematic reserves the right to alter specifications without notice. Machines shown in pictures may be equipped with options.